

ANTI MALWARE

User Manual



Anti-Malware
by ShieldApps

Anti Malware Operation Manual
ShieldApps Software Innovations.
All Rights Reserved 2012 - 2017



Table of Contents

Welcome.....	3
Compatibility.....	3
Installation Guide.....	4
Registration.....	6
Overview.....	8
Scan.....	9
Manage.....	14
History.....	15
Quarantine.....	16
Always Allowed.....	17
Schedule Scans.....	18
Anti Malware Updates.....	20
Tools.....	21
History Cleaner.....	22
Secure File Eraser.....	23
Start-Up Manager.....	24
Settings.....	25
General.....	25
Scan Options.....	26
Uninstall.....	28
Help & Support.....	29

Welcome to ShieldApps' Anti Malware

This guide is devised to lead you through the installation process and general usage of the software. ShieldApps' **Anti Malware** has been developed to detect and block both known and new malware, viruses, Trojans, and other malicious files.

Compatibility

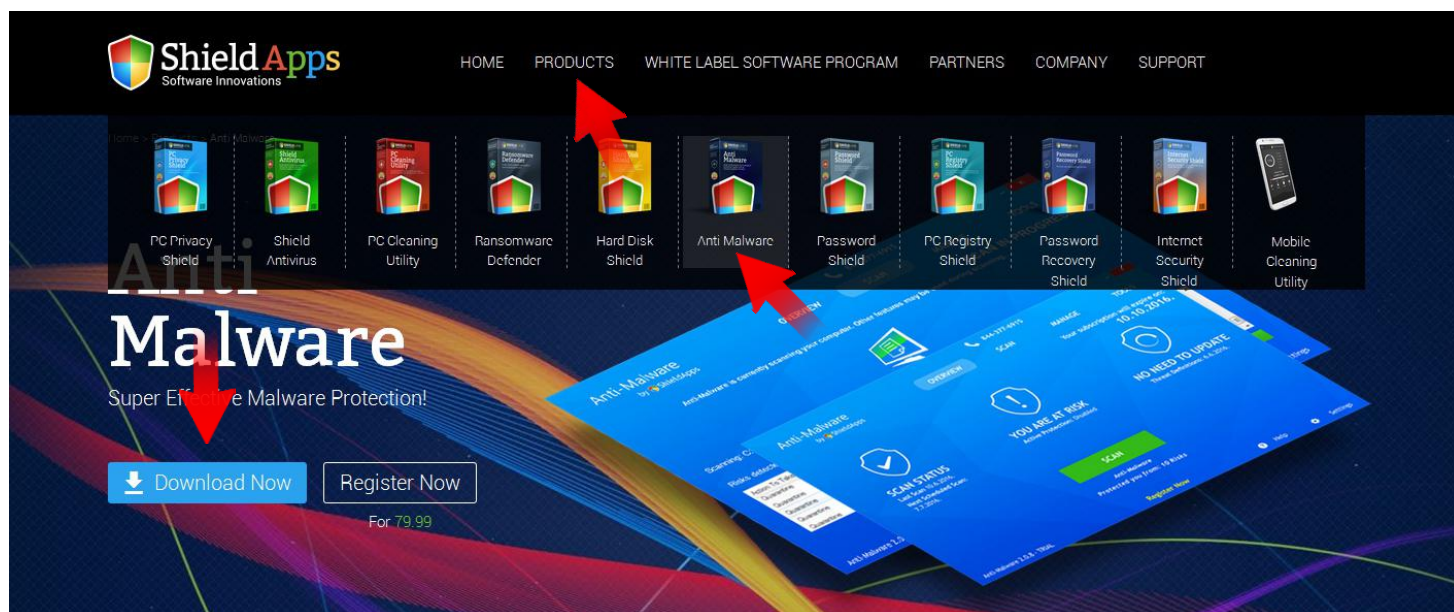
Anti Malware supports Windows versions:

 Windows XP  Windows Vista  Windows 7  Windows 8  Windows 8.1  Windows 10

Installation Guide

To obtain your copy of Anti Malware, please follow the steps below:

- ✓ Go to ShieldApps.com
- ✓ Under the **"Products"** menu, choose Anti Malware
- ✓ Click the **"Download Now"** button and save the product on your computer



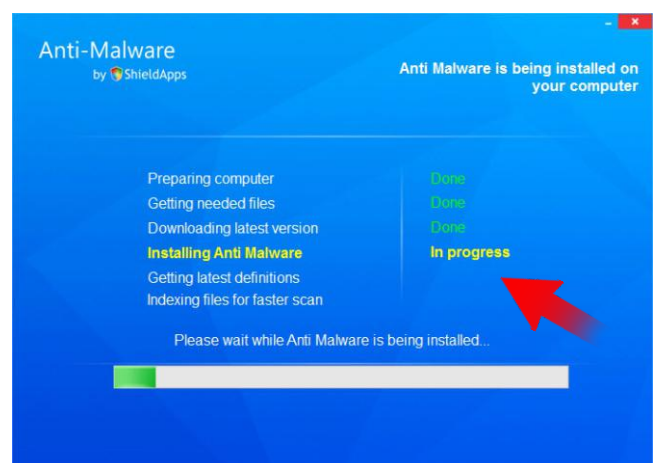
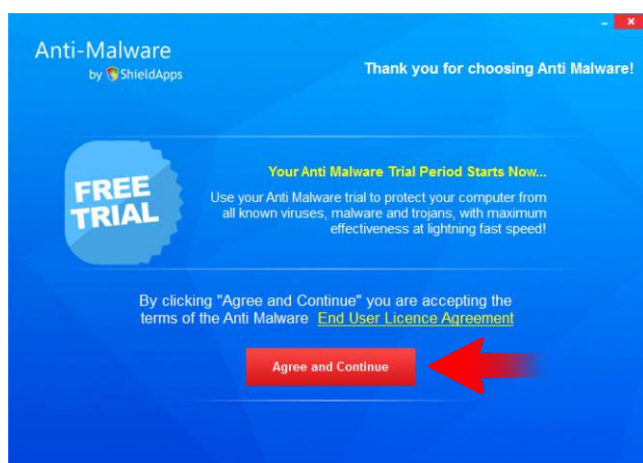
Installation Guide

To initiate the installation process,
double-click the downloaded file icon.
Anti Malware's installation process will start promptly.



Please note: before you confirm the installation process,
we urge you to read product's terms and conditions (**"End User License Agreement"**)
by clicking on the relevant link, as shown below.

The installation process includes a vast malware database download, and thus takes a while.
Once downloaded, your Anti Malware threats database will be up-to-date and provide
maximum protection.




Installation Guide



Once all the needed files are downloaded and unpacked, Anti Malware will launch automatically and an installation confirmation page will open to confirm a successful installation.



HOMEPRODUCTSWHITE LABEL SOFTWARE PROGRAMPARTNERSCOMPANYSUPPORT

Home > post install > Anti Malware successful installation

Anti Malware successful installation

How does Anti Malware Work?

Anti Malware is designed for simplicity and ease of use. All you need to do is run the application, let it scan your PC for all threats, and then click "Clean Now" to eliminate all found issues and threats – **That's it!**

1


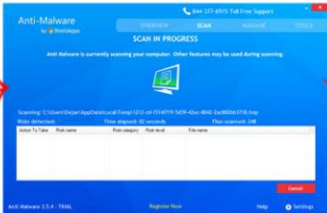

Scan for Threats – With a fast and advanced scan algorithm, Anti Malware scans the entire system with hardly any effect on CPU resources and speed. Use "Quick Scan" for a faster, more common search process.

2

Let the Scan Run – A Quick Scan should take a couple of minutes. If you choose deeper scans, it might take several minutes – let the scan run its course till it's finished.

3

Review the Scan Results and Delete the Threats! – Review all the threats found by the Scan and either manually choose which ones to delete, or simply Clean All as suggested by the Recommended Action button.

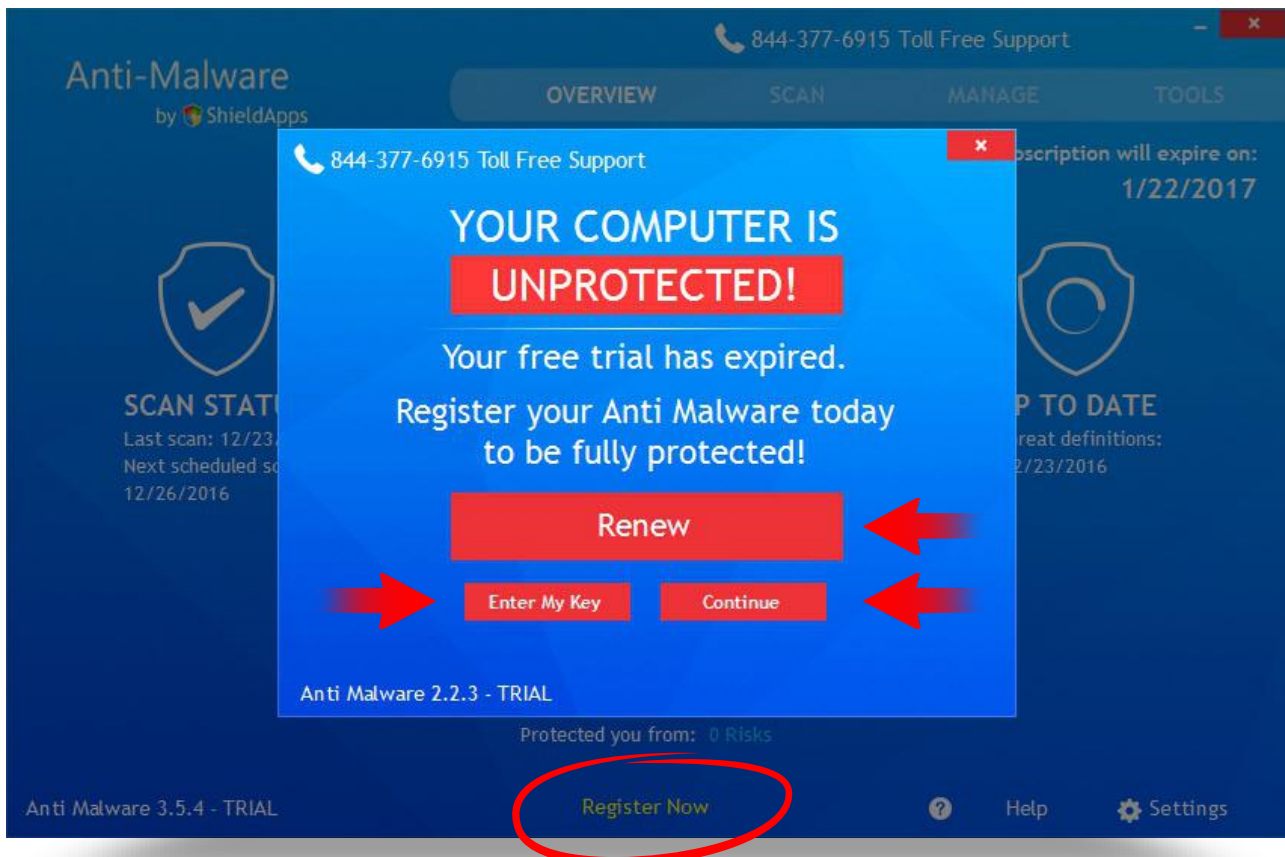




Registration

Upon its first run, the software will ask you to either register or continue using a trial version for 30 days.

For a Trial period click **“Continue”**.

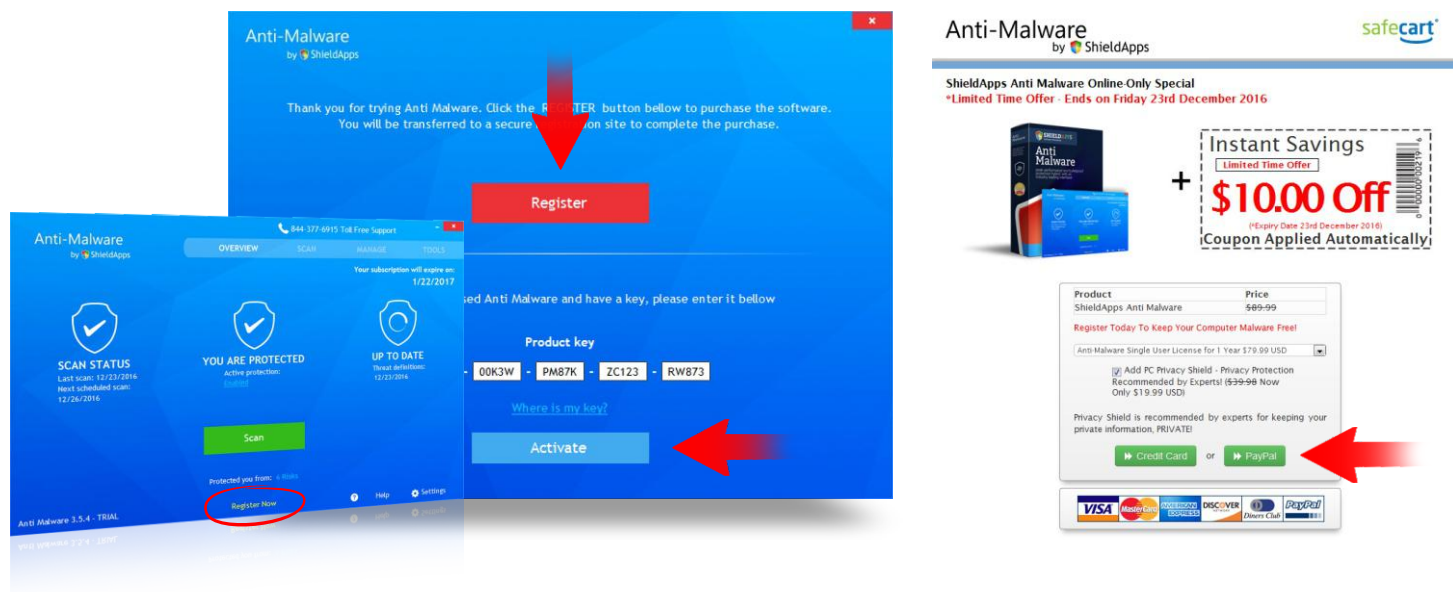


If you have already registered your copy:

- ✓ Click **“Enter My Key”**
- ✓ Copy and paste* your key
- ✓ Click **“Activate”**



Registration



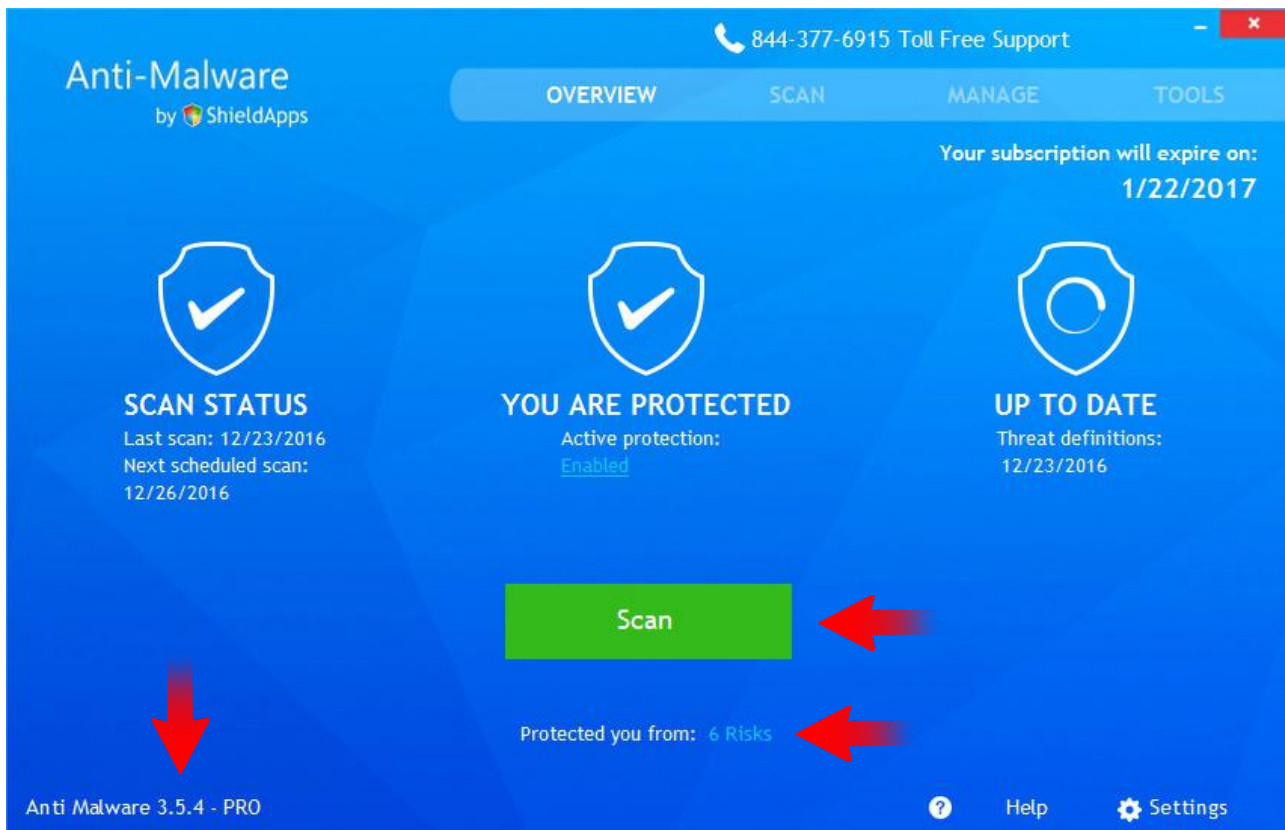
To register your software copy and upgrade to a fully featured premium version:

- ✓ Click the **“Register”** button
- ✓ Follow the registration process prompts
- ✓ Upon successful registration, a license key will be delivered to your email address
- ✓ Copy and paste it to the activation box
- ✓ Click **“Activate”**

*Hover over the license key with holding left-click to highlight it. Click right-click and select **“Copy”**. Go back to the registration box, right-click, choose **“Paste”** from the menu.

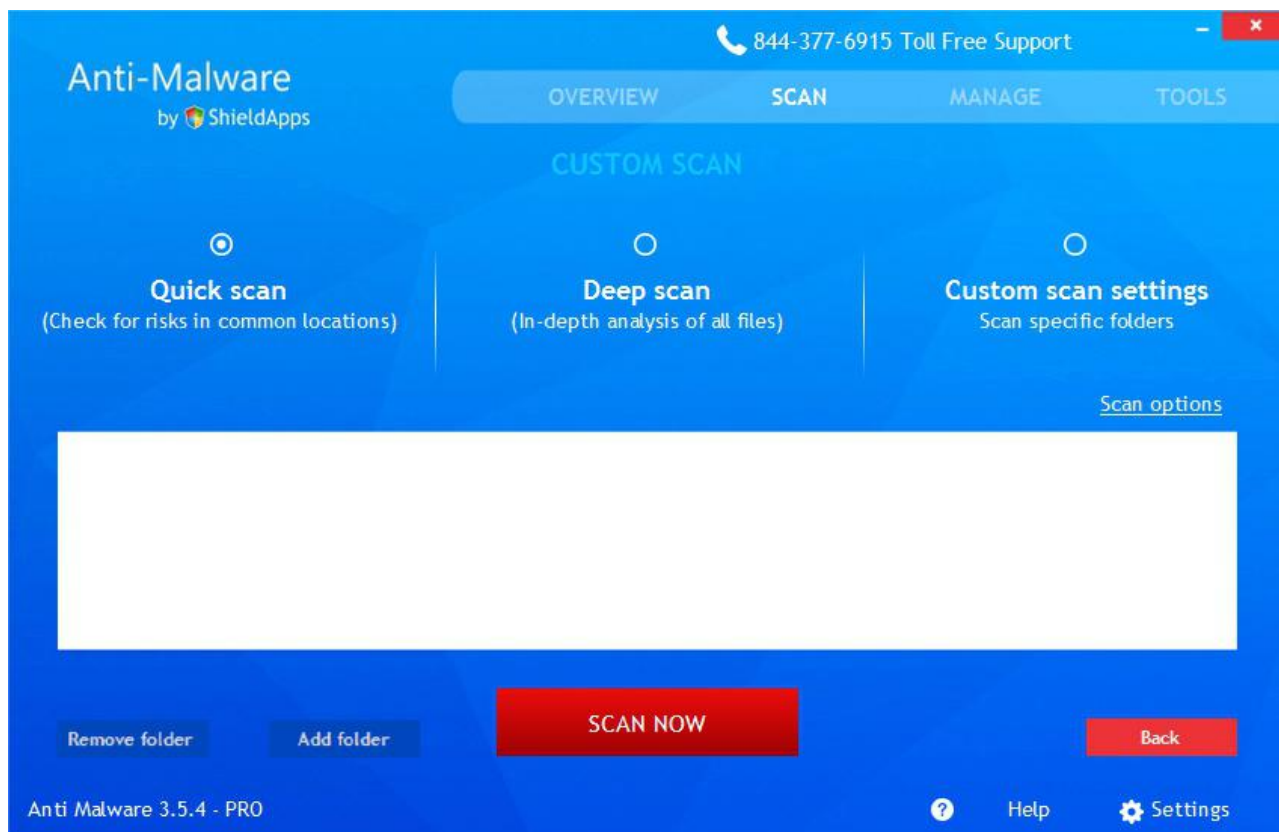
The Overview page displays the main information needed for the every-day use of Anti Malware.

Everything from basic scan, the software version, the number of threats detected, and prevented infections will be displayed here.



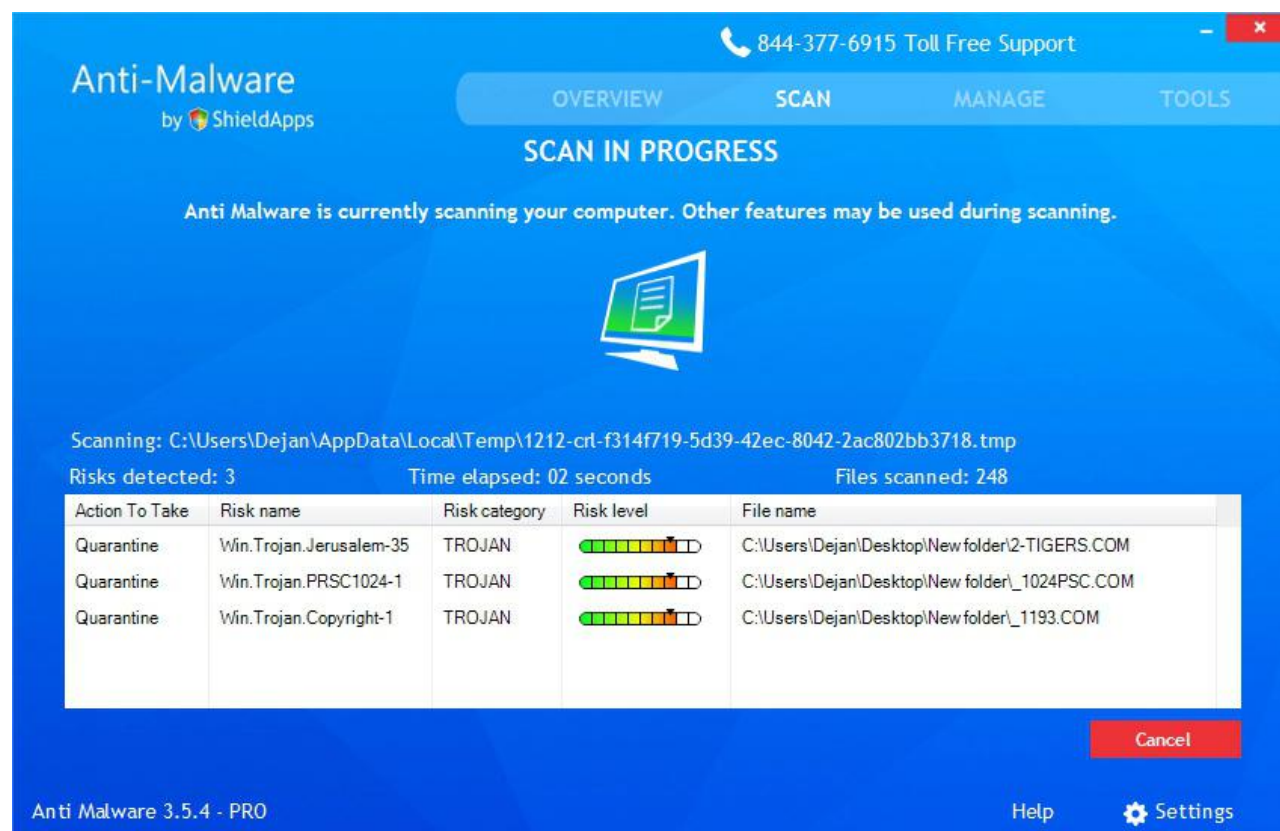
The center button will start a scan when clicked. Three optional scan types are available:

- ✓ “Quick”
- ✓ “Deep”
- ✓ “Custom”



Quick Scan

This scan will run through the system, and look for common hazards. It takes just a few minutes before a full threat-report to display with relevant concerns and suggested actions.

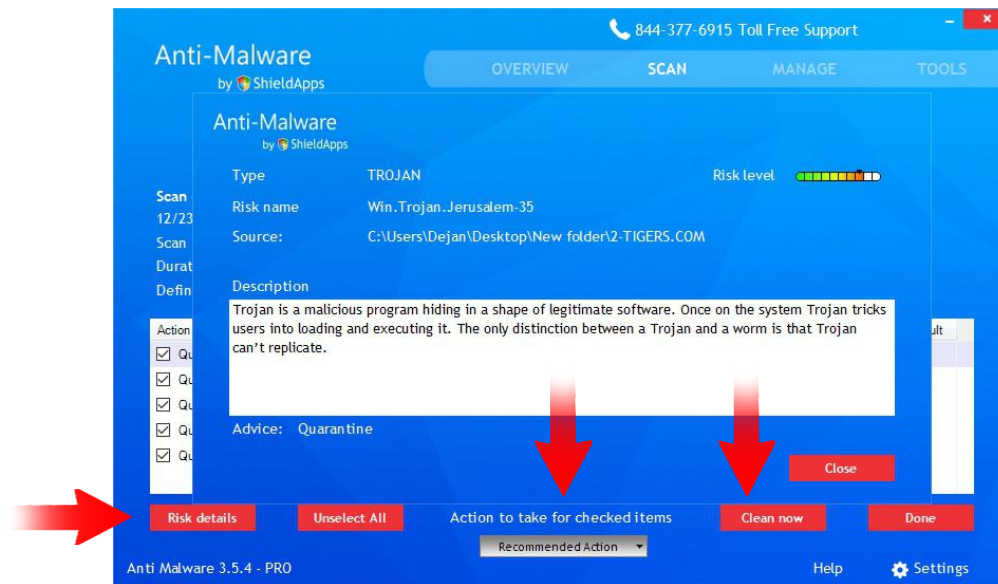


Once the scan is complete, a full list of threats, their name, risk level and location on the computer will be displayed.



To see details for any of the found threats:

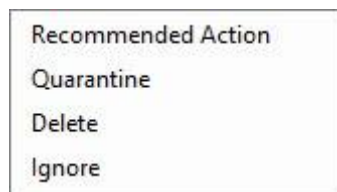
- ✓ Click on a threat
- ✓ Click **“Risk Details”**



Cleaning methods are placed below. By default, if **“Clean Now”** button is pressed a recommended action is taken.

To change the default settings:

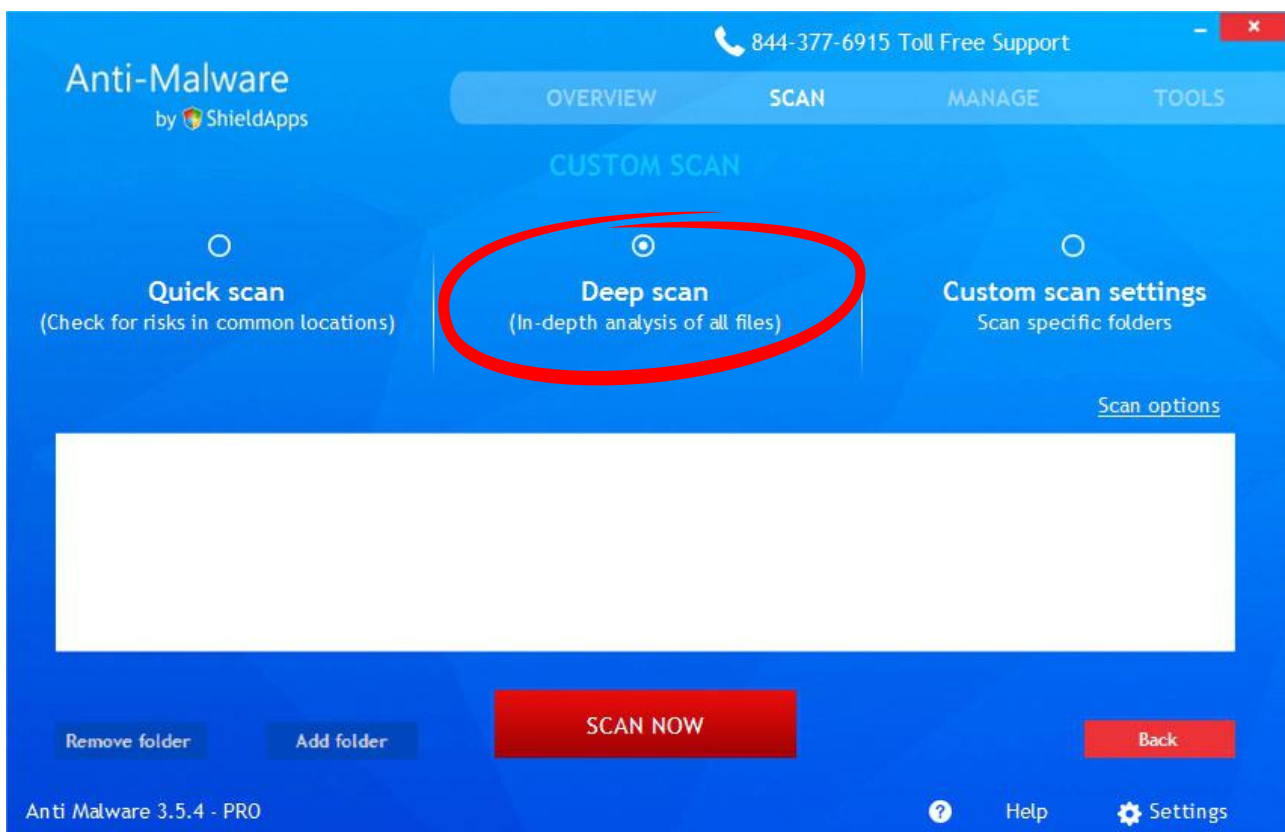
- ✓ Click on the drop-down menu
- ✓ Select either: **“Recommended Action”**, **“Quarantine”**, **“Disinfect”**, **“Delete”** or **“Ignore”**.



After a selected action is taken, click **“Done”**.
The software returns to Overview page by default.

Deep Scan

This option provides a deeper, more thorough scan of the system. Thanks to advanced algorithms, the software is able to look into deeper folder levels for possible active or dormant threats. This scan takes a bit longer, as each level of folders includes thousands of files to be scanned. Once the scan is complete, the results and actions will appear.

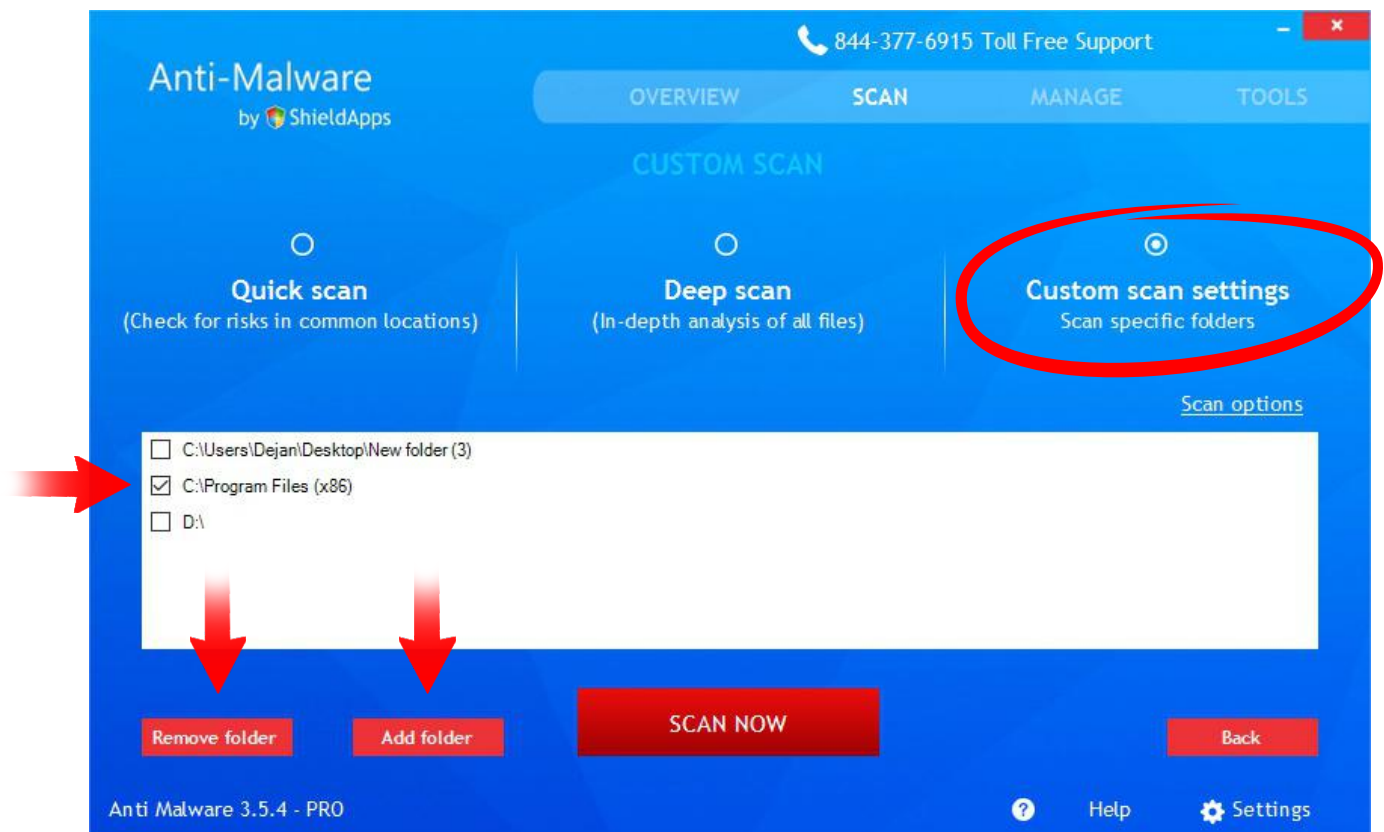


Custom Scan

This option is devised for special scans. If some file or folder are suspected to be infected click **“Add Folder”** and that specific folder will be scanned for threats.

To create a custom scan:

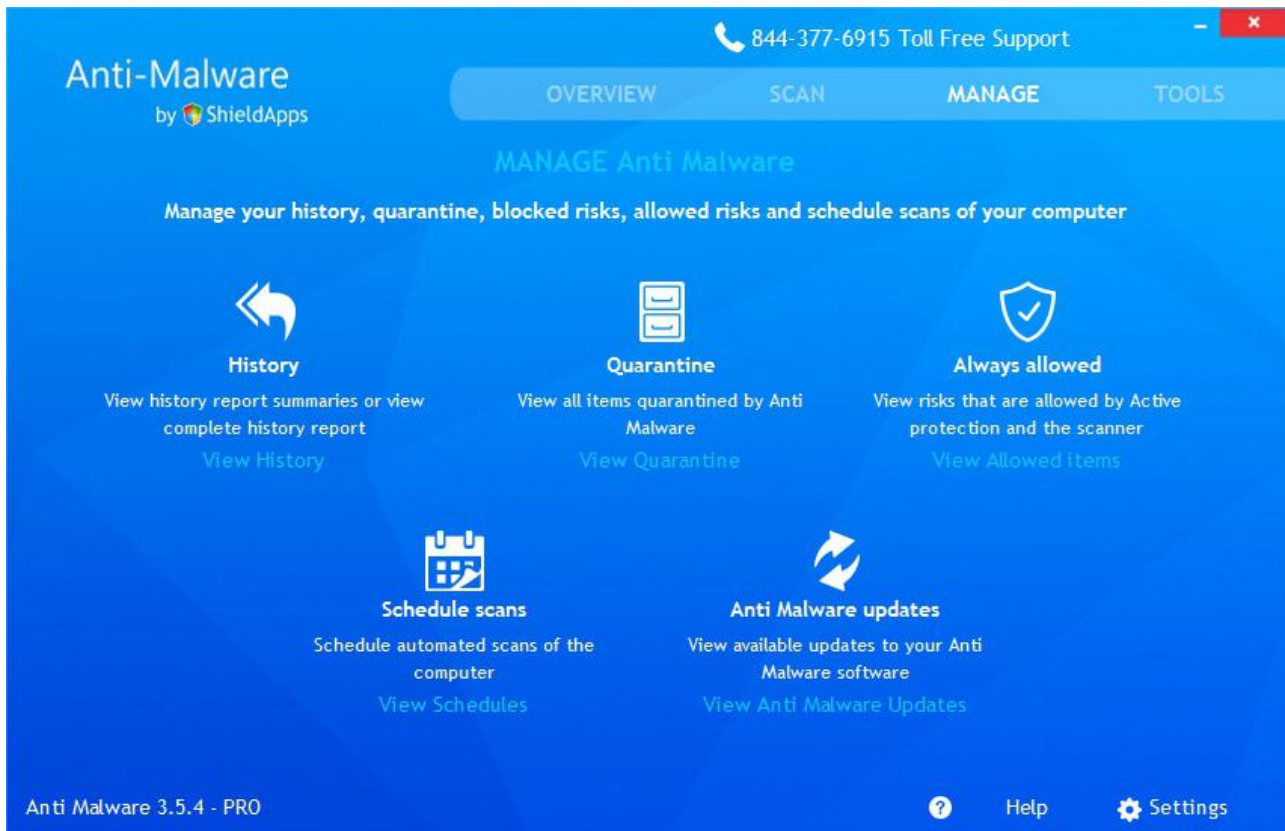
- ✓ Click **“Add Folder”**
- ✓ Choose a folder
- ✓ Pick an action



There's no limitation on a number of files and folders that can be added. To remove a folder from the list, check the box next to its name, and click **“Remove Folder”**.



The Manage tab provides additional tools and information. Each feature has its own settings.



Manage tab contains:

- ✓ “History”
- ✓ “Quarantine”
- ✓ “Always Allowed”
- ✓ “Scheduled Scans”
- ✓ “Anti Malware Updates”

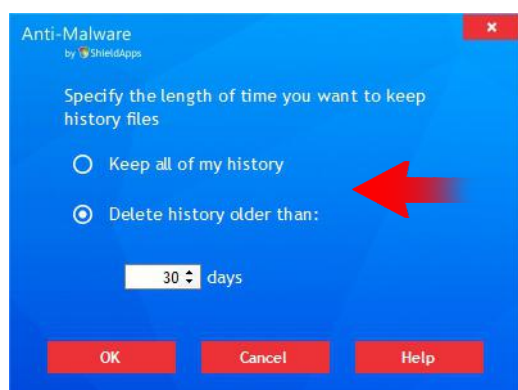
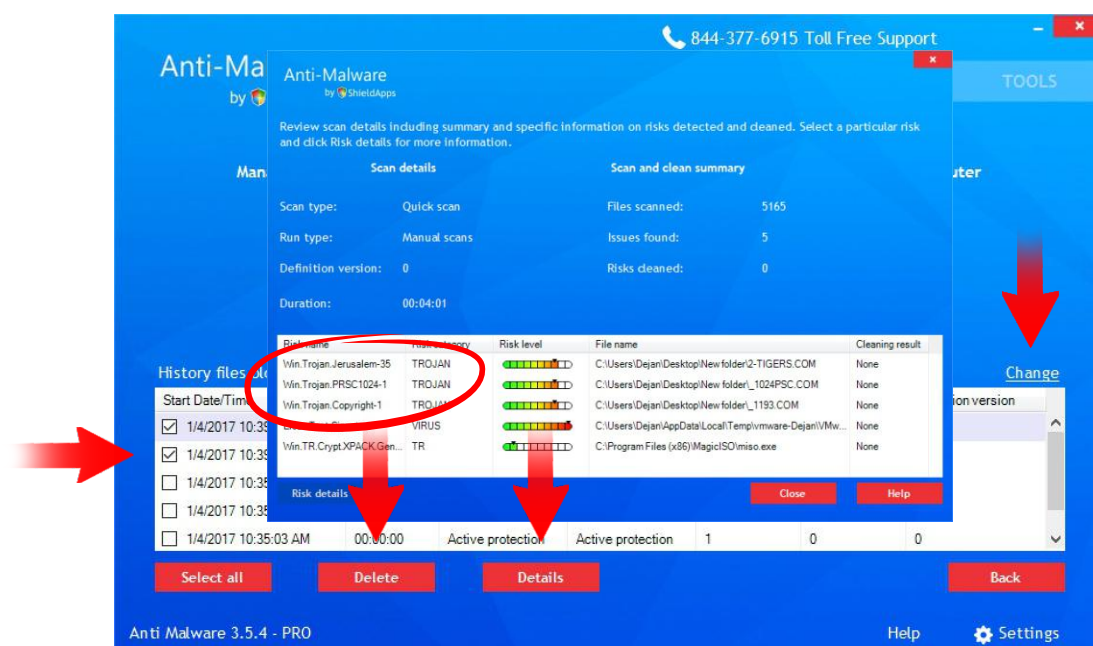


History

This feature contains information about the history of scans and cleaning actions. To check details of any scan, click on the **“Details”** button.

Each history log can be manually removed:

- ✓ Check the box next to the log
- ✓ Click the **“Delete”** button



To automate this operation:

- ✓ Click **“Change”** (right side of the list)

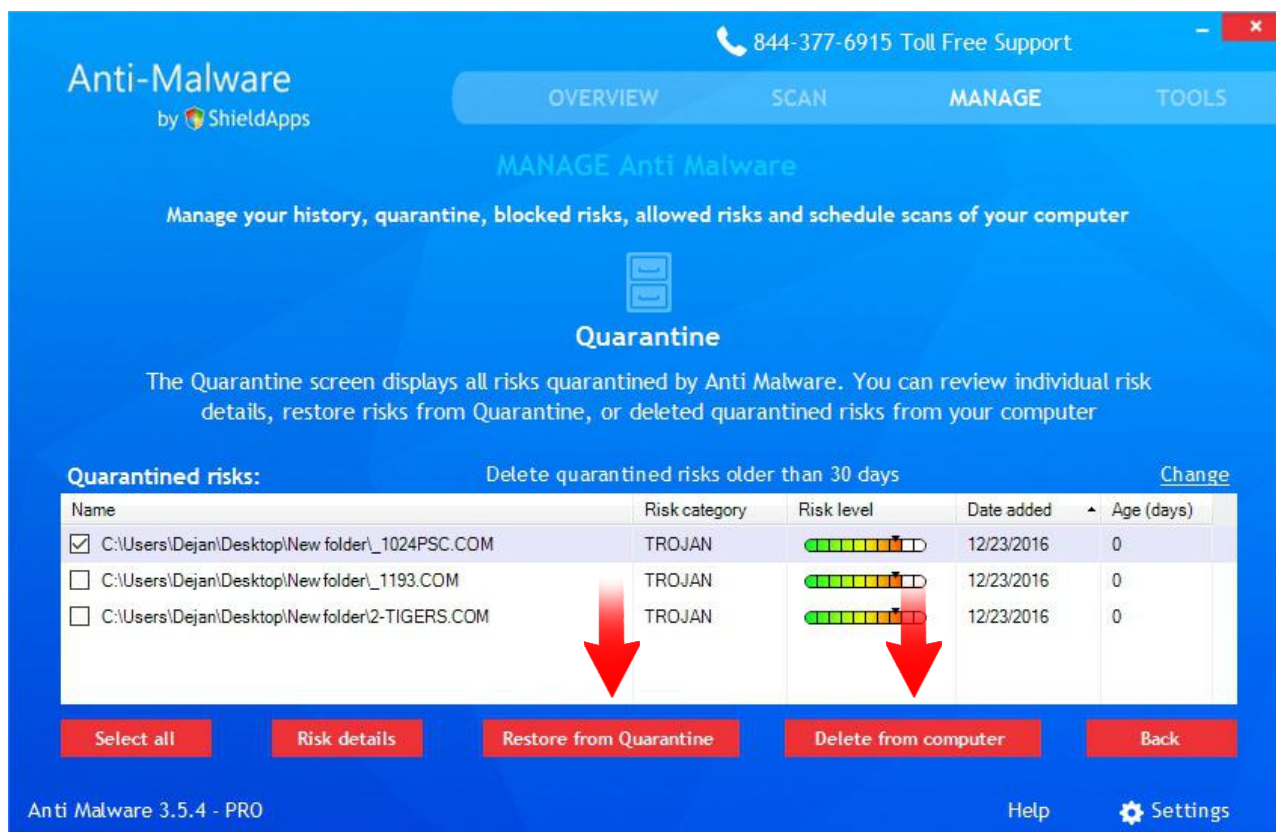
Choose to keep the entire history or remove anything older than specified number of days



Quarantine

This feature holds the information about every malicious file that has been in the quarantine.

To remove it permanently, click **“Delete From Computer”**, to put it back to use click **“Restore From Quarantine”**.

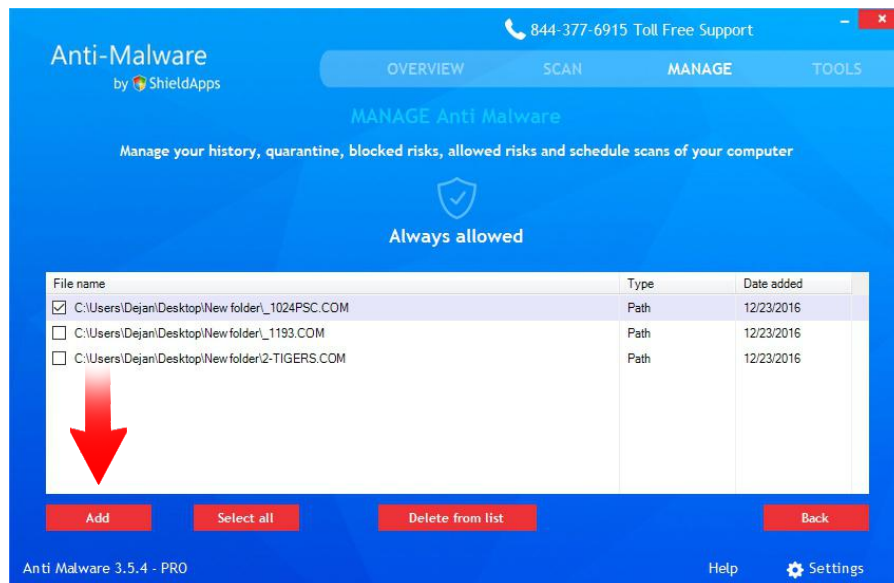


When threats are restored, the software seeks action confirmation. Also, the software will offer to place the file inside the **“Always Allowed”** section.



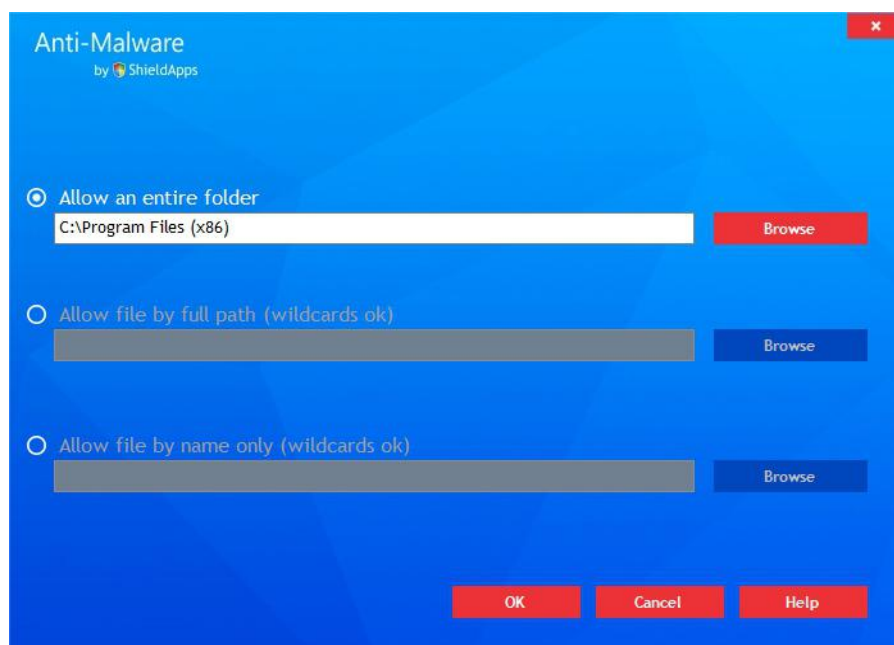
Always Allowed

This section is used to list pre-approved files and prevent their scanning and detection by Anti Malware's engine.



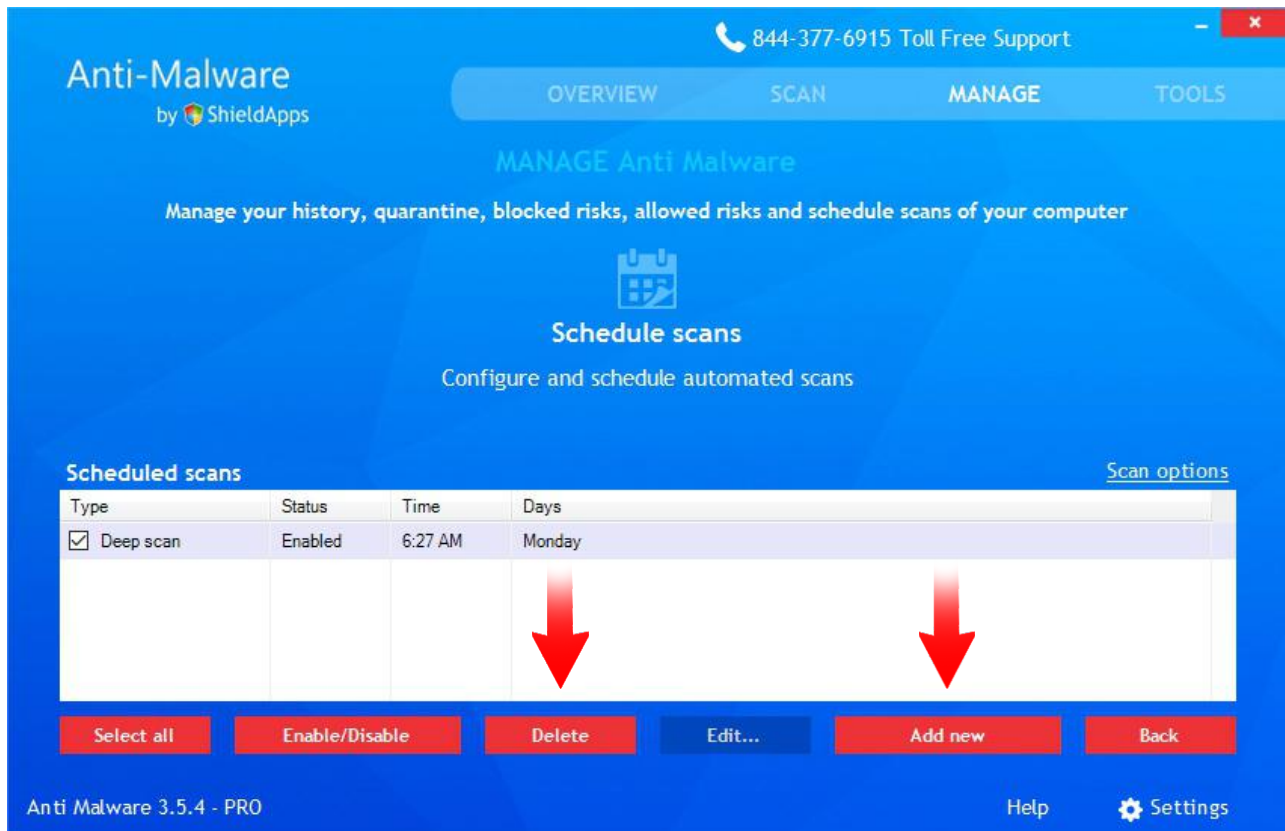
To exclude files from being scanned:

- ✓ Click **"Add"** button
- ✓ Find the file's location
- ✓ Confirm



Schedule Scans

The feature allows the software to be fully automated. Numerous schedules can be created with the precisely defined time, date and type of scan.

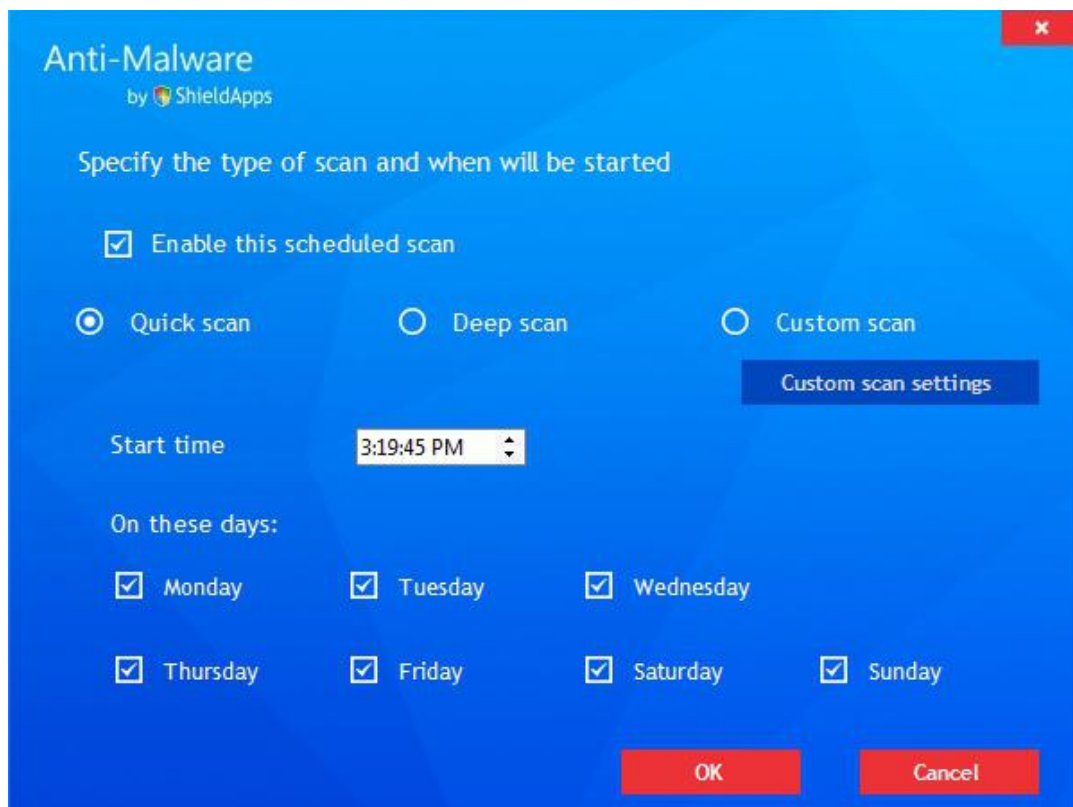


Multiple schedules are available. While the "**Delete**" button removes every scheduled scan which has a checked box.



To create a scheduled scan/clean:

- ✓ Click **“Add New”**
- ✓ Set the time of the scan
- ✓ Pick a type of scan



The screenshot shows the 'Anti-Malware' configuration window by ShieldApps. The window has a blue background and a red close button in the top right corner. The title bar reads 'Anti-Malware by ShieldApps'. The main text says 'Specify the type of scan and when will be started'. There is a checkbox labeled 'Enable this scheduled scan' which is checked. Below this are three radio buttons: 'Quick scan' (selected), 'Deep scan', and 'Custom scan'. To the right of the 'Custom scan' radio button is a button labeled 'Custom scan settings'. Below the radio buttons is a 'Start time' field showing '3:19:45 PM' with a dropdown arrow. Underneath is the section 'On these days:' followed by seven checkboxes for the days of the week: Monday, Tuesday, Wednesday, Thursday, Friday, Saturday, and Sunday. All seven checkboxes are checked. At the bottom right are two red buttons: 'OK' and 'Cancel'.

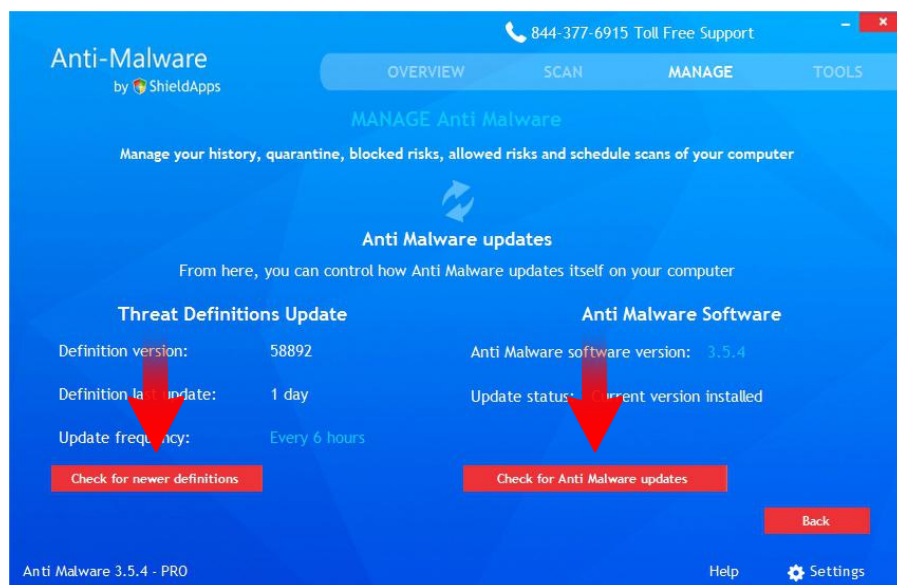


Anti Malware Updates

By default, the software is set to update everything automatically.

To check for updates manually:

- ✓ Click “Check For Anti Malware Updates”
- ✓ Click “Check For Newer Definitions”



The page also displays detailed information about the current version of both the software and threats database installed on the computer.



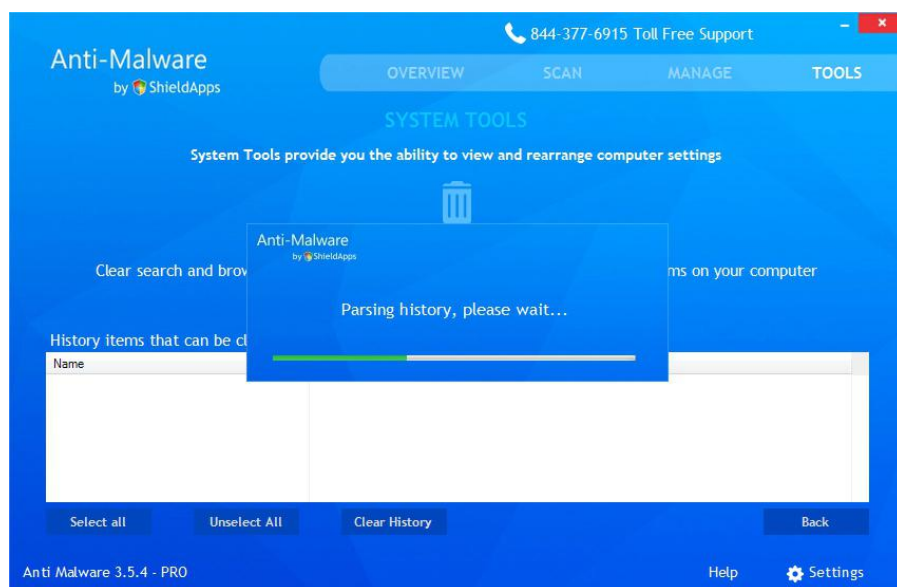
If there are software or threats database updates, their download and installation will begin instantly. If not, the software will display a message about already having the latest version.

Anti Malware can be used for more than just malware protection. The additional tools can improve privacy, PC's performance and support proper hard drive maintenance.

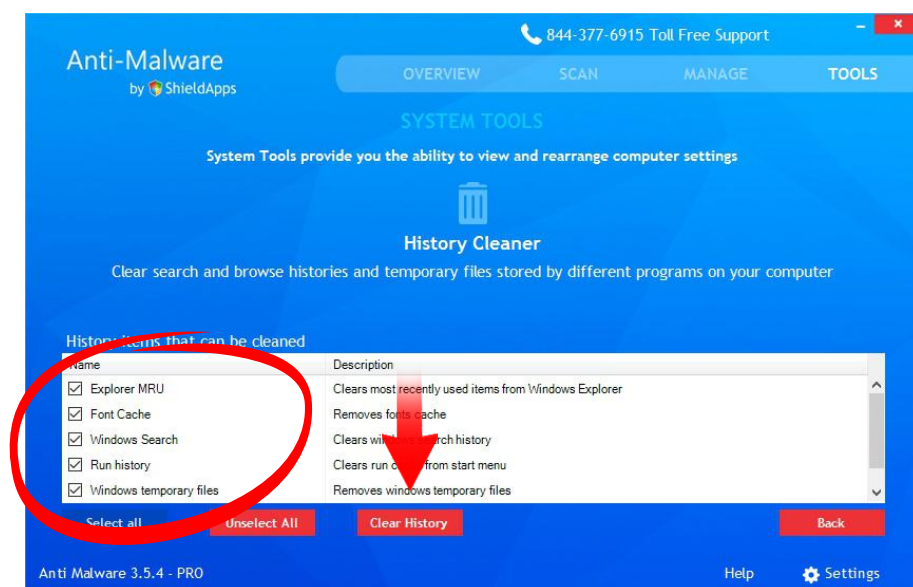


History Cleaner

This tool searches through the usage records, allowing its complete removal.



At the same time, the software looks for temporary files created by an application on the system and supports its deletion as well.



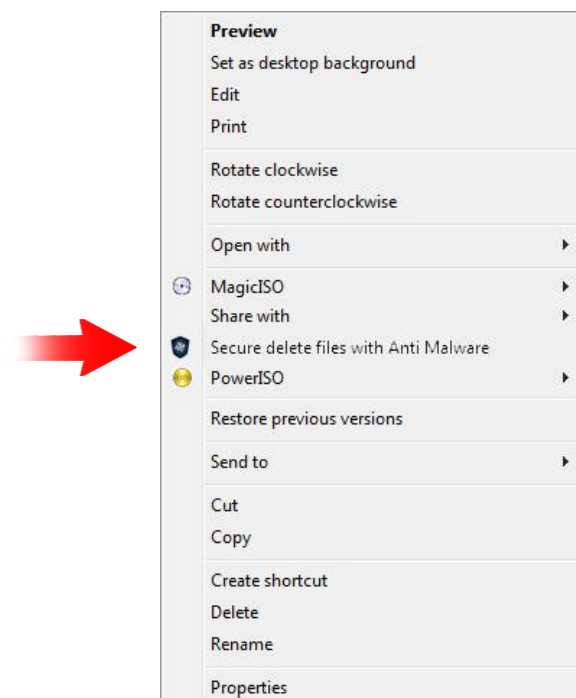
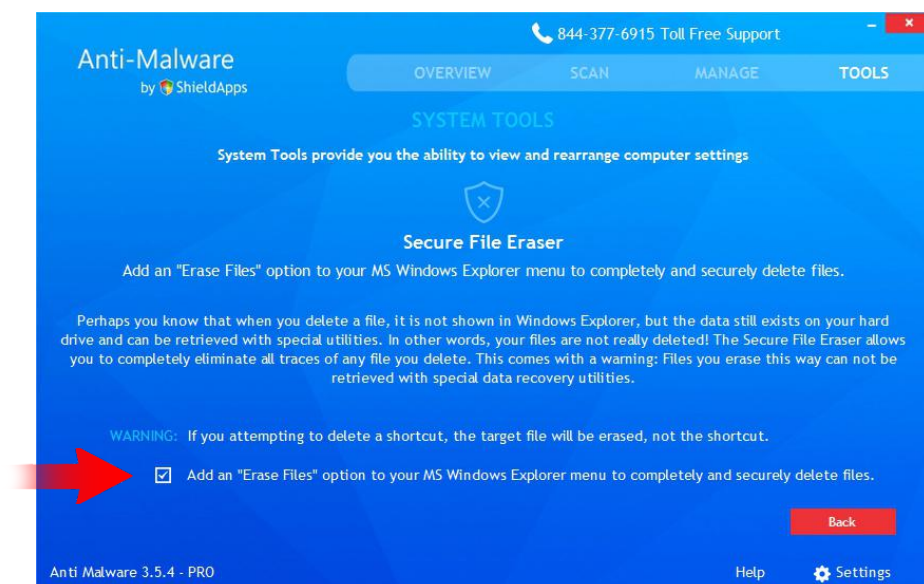
To remove potential privacy concerns and junk files from the hard drive, click **“Clear History”**. Check the box next to the name of the history/program if you wish to selectively delete specific items.

Secure File Eraser

This tool adds a right-click item to your standard right-click menu that allows safe deletion of files on your computer.

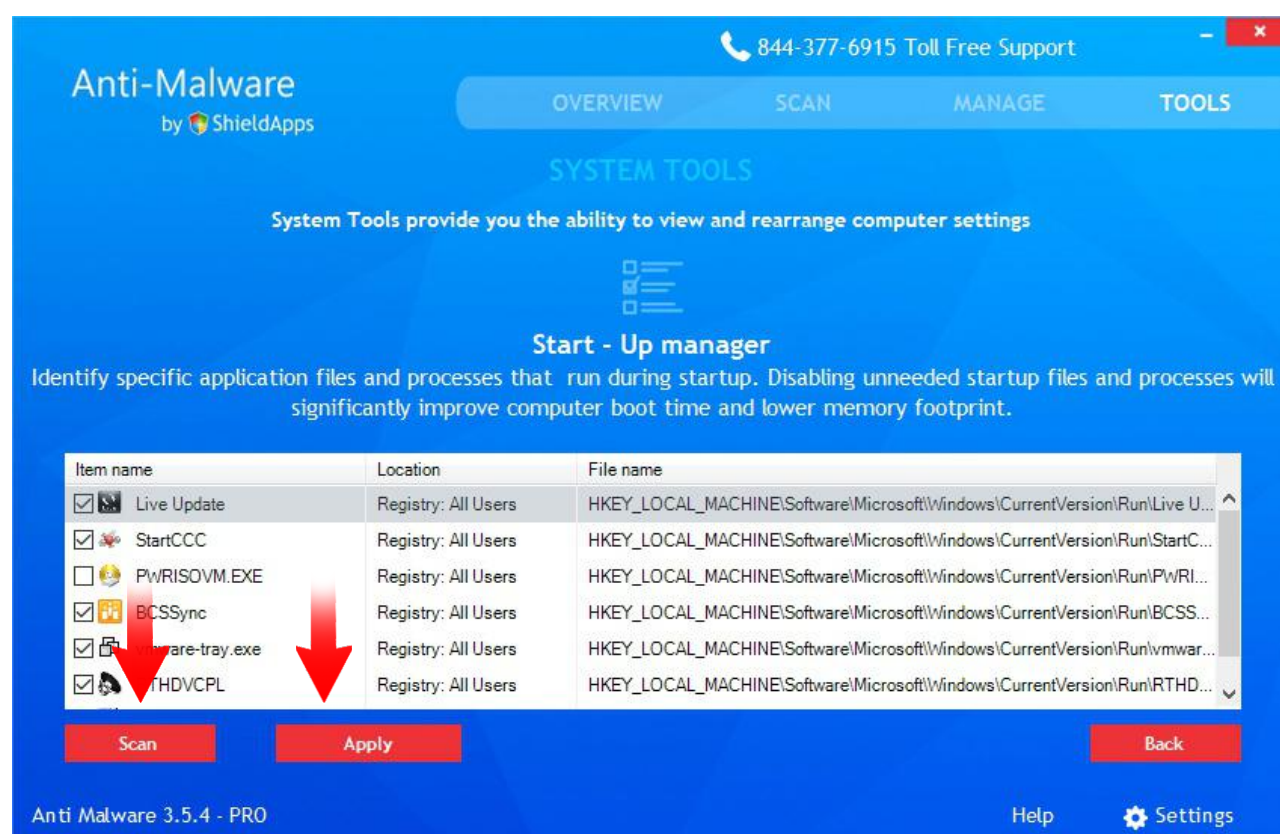
To turn on this tool:

- ✓ Check **“Add an Erase File”** box
- ✓ A new option will be added to the right-click menu



Start-Up Manger

This tool allows you to control which programs are launched by default upon reboot/startup of your computer. Some software automatically add themselves to the startup sequence and make it slower and more time consuming, so removing those from the startup process will speed up boot time, piling of startup applications and improves boot speed of the computer.



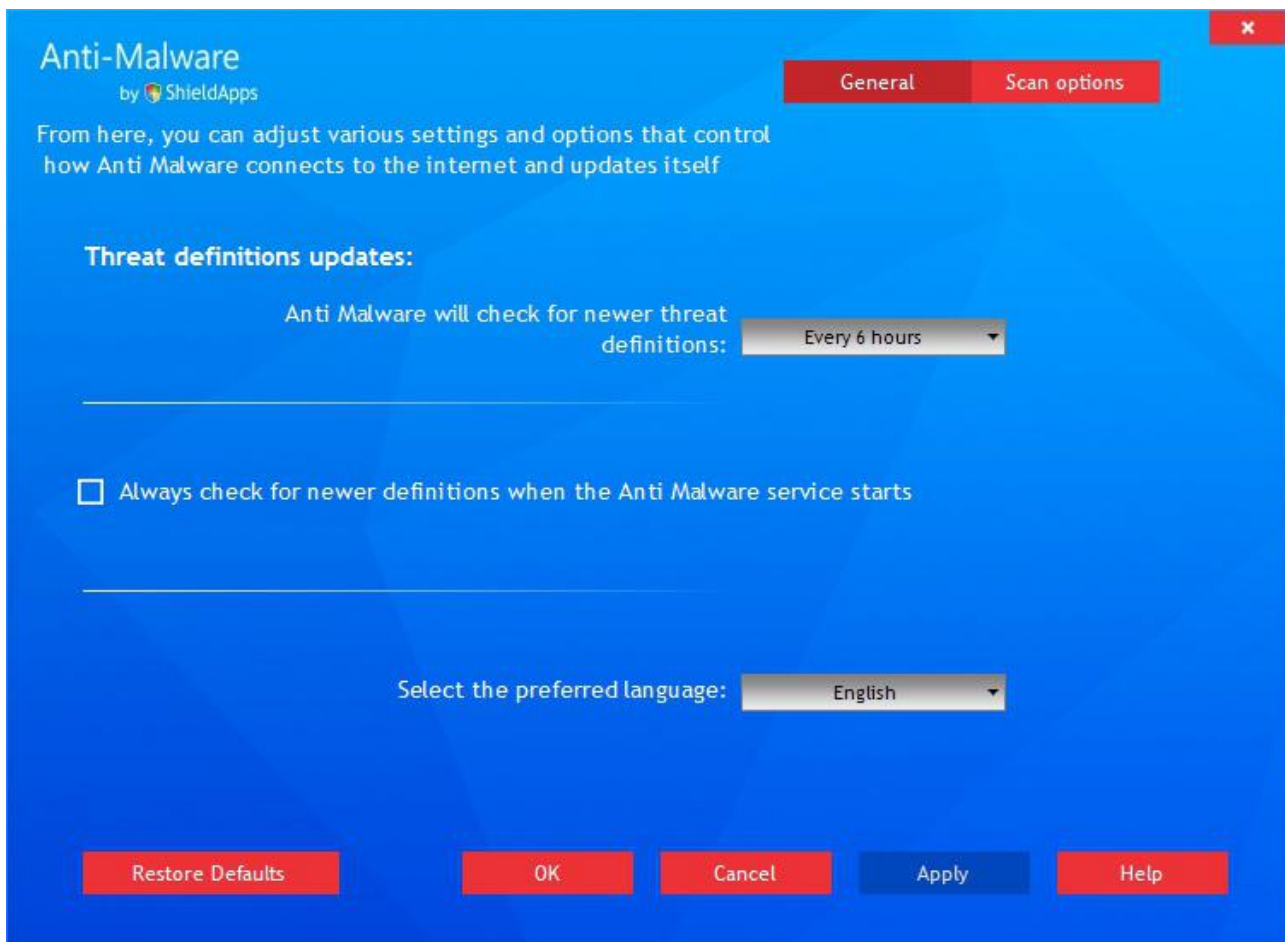
To pick which software will start alongside with the system:

- ✓ Click **“Scan”**
- ✓ By clicking the box next to the software’s icon pick which will start with the system
- ✓ Click **“Apply”**

Each of the software's option can be tweaked, changed or adjusted from within the settings menu. Some additional tools are also available in this menu.

General

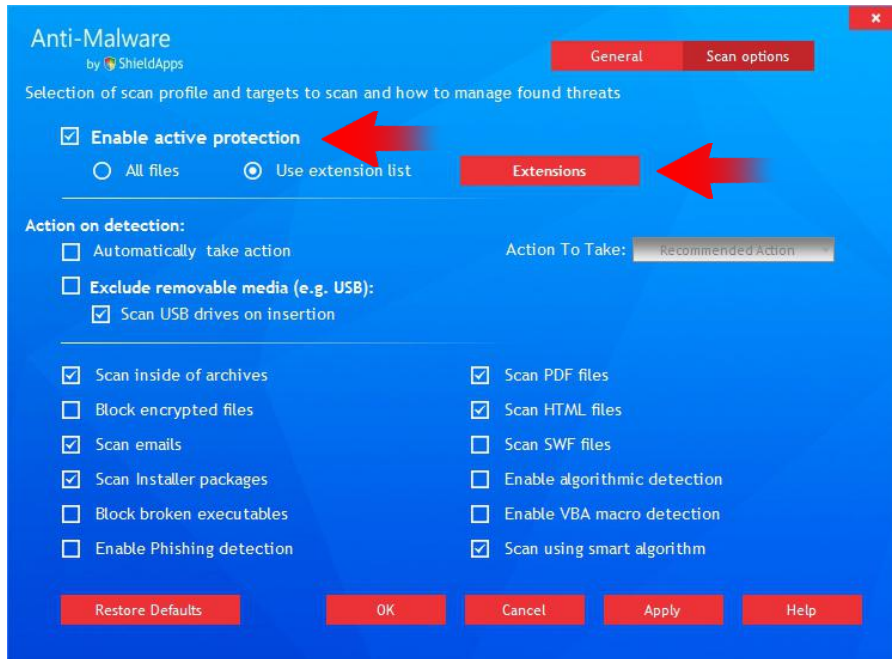
Regular settings, definitions update and language (9 different) are adjusted here.



Scan Options

This tab contains protection details. Scan areas, type of files and extensions that are scanned are all defined in this tab.

Active protection allows real-time notifications in a form of a prompt window every time a new threat is found.

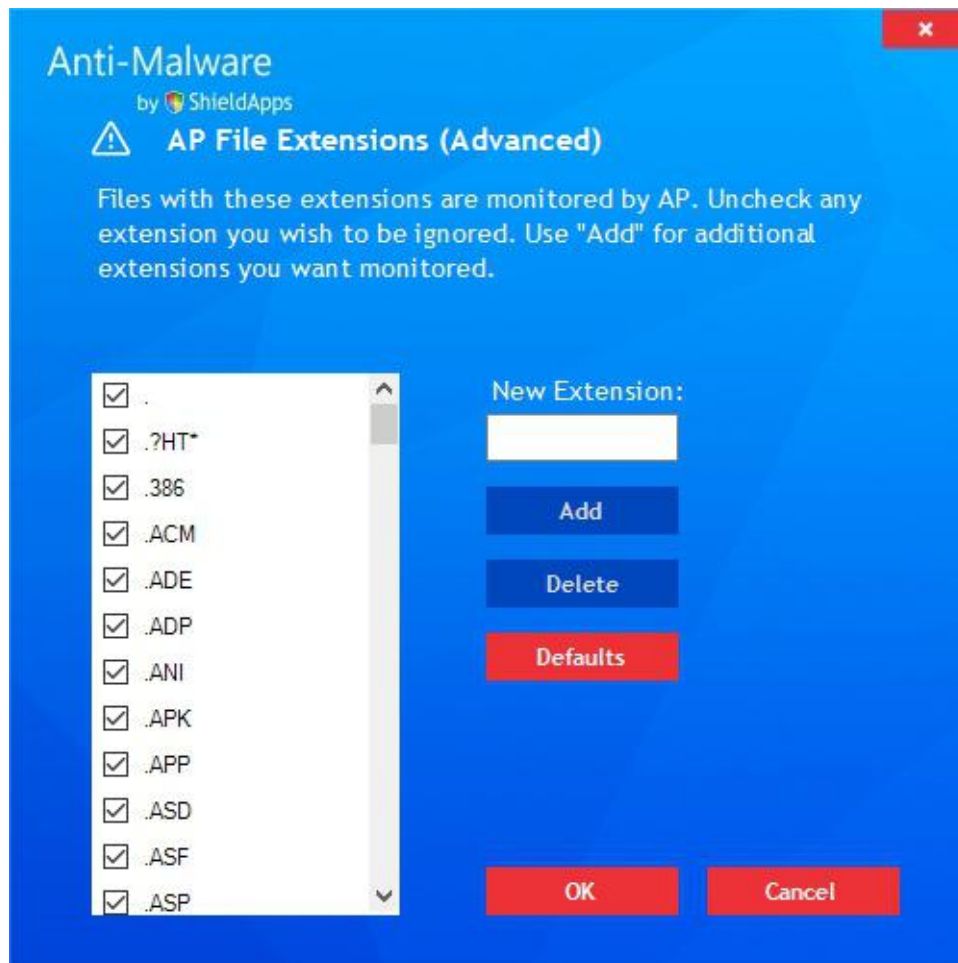


Once the threat is found the software offers a few options:

- ✓ "Delete"
- ✓ "Quarantine"
- ✓ "Ignore"



Active protection can be standard for all the files on the computer, but it can also be specified for the type of files which will be closely monitored.



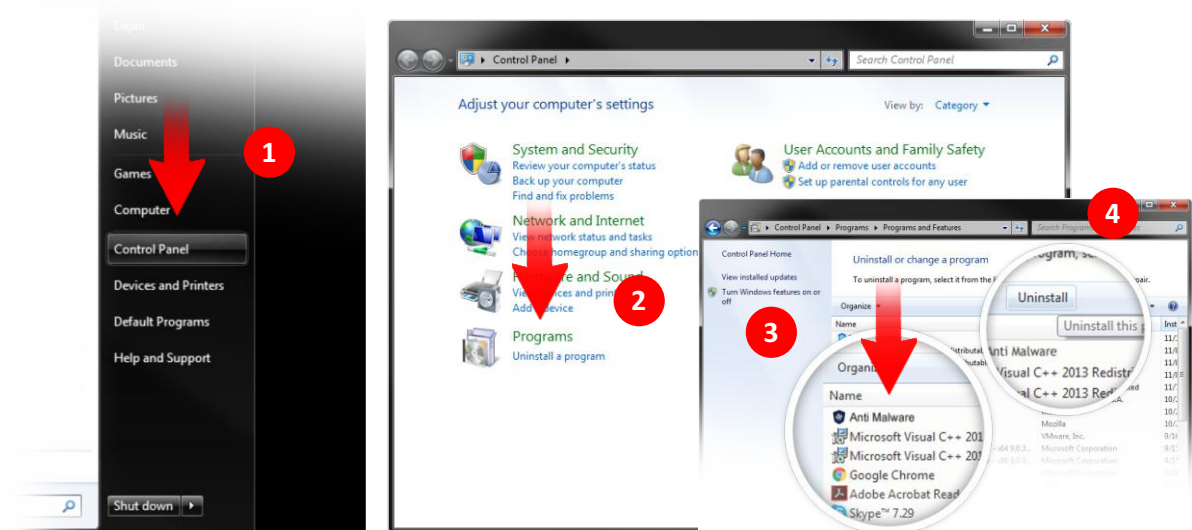
To extend or reduce the list of files that are scanned:

- ✓ Check **“Use Extension List”**
- ✓ Open **“Extensions”** menu
- ✓ Check on uncheck extensions for scanning

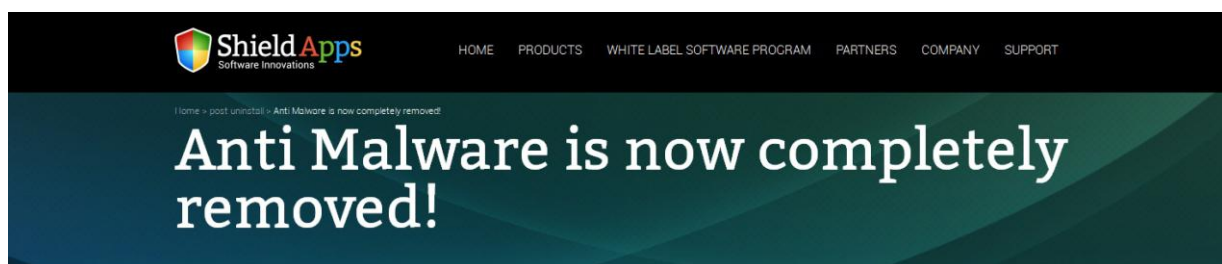


To remove the software from the PC:

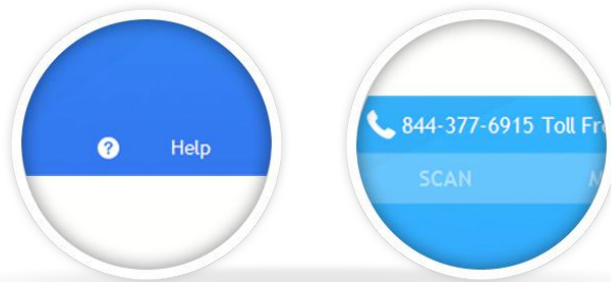
- 1 Go to Windows Control Panel
- 2 Locate **“Programs” – “Uninstall a Program”**
- 3 Locate Anti Malware
- 4 Click **“Uninstall”**




Once the uninstall is complete a confirmation page will open.



If there's anything our team can help you with or there is something you don't understand, you can always click the **"Help"** button. It will instantly take you to our FAQ page where you can look up anything that might be confusing you. If this doesn't help, you can contact us 24/7 through our email center on the support page, or by calling us directly using the number in the software.





HOMEPRODUCTSWHITE LABEL SOFTWARE PROGRAMPARTNERSCOMPANYSUPPORT

Home > Support > Anti Malware Support

Anti Malware Support

Please browse the frequently asked questions below. If you do not find the answer to your question - please contact us via the form below.

Installing Anti Malware

To properly install Anti Malware please follow the steps below.

1. Download Shield Antivirus. If prompted by the browser, click on the download confirmation.
2. After the download is complete, click on the downloaded file shortcut.
3. Confirm the installation process by clicking on the "Yes" button.
4. Click on the "Install" button and let the installation process run its course.
5. After Anti Malware installs on your computer, the program will open after it finishes loading.
6. You are all DONE! Anti Malware will begin scanning automatically and report back with all relevant issues and concerns to you private information.

Uninstalling Anti Malware

